



Model	DT362GL	DT382GL	DT301Y	DT311Y
-------	---------	---------	--------	--------

System

CPU	Intel® Pentium® Silver 4-Core, 1.1 GHz (up to 2.7 GHz)		Intel® Pentium® Gold 7505, 2-Core, up to 3.5 GHz Intel® Core™ i5-1135G7, 4-Core, up to 4.2 GHz Intel® Core™ i7-1165G7, 4-Core, up to 4.7 GHz	Intel® Core™ i5-1135G7, 4-Core, up to 4.2 GHz Intel® Core™ i7-1165G7, 4-Core, up to 4.7 GHz
RAM	8GB	8GB	8GB to 32GB	8GB to 32GB
Storage	256GB flash	256GB flash	256GB to 2TB Flash	256GB to 2TB Flash
Operating System	Microsoft® Windows® 10/11 IoT Enterprise		Microsoft® Windows® 10/11 IoT Enterprise	
NIST Compliance	NIST Compliant BIOS Available		NIST Compliant BIOS Available	
Display	6" LED-backlight (350 nits) screen with capacitive touch	8" LED-Bcklit, High-Brightness (800 nits) Touchscreen	10.1" LED-Backlit, High-Brightness (800 nits) Touchscreen	11.6" LED-Backlit, High-Brightness (1000 nits) Touchscreen
Display Resolution	720 x 1440	1280 x 800	1920 x 1080	1920 x 1080
Fan/Fanless	Fanless	Fanless	Fanless	Fanless
Switches & Buttons	1 x Power Button, 2 x Trigger Buttons	1 x Power Button, 2 x Trigger Buttons, 2 x Brightness Buttons, 4 x Programmable Buttons	1 x Power Button, 2 x Brightness Buttons, 5 x Programmable Buttons	1 x Power Button, 2 x Brightness Buttons, 5 x Programmable Buttons
Microphone	N/A	N/A	Built-In Microphone	Built-In Microphone
Speaker	N/A	Built-In Speaker	Built-In Speaker	Built-In Speaker

Network Interface

WLAN	Wi-Fi 802.11ac, 2.4/5 GHz Dual Band		Wi-Fi 802.11ax, 2.4/5 GHz Dual Band	
BT	4.2 LE	4.2 LE	5.2	5.2

I/O Ports

USB Port	1 x USB Type-C (data transmitting and charging; data transmitting only available in one insertion direction)	1 x USB 3.0, 1 x USB Type-C (data transmitting and charging)	1 x USB 3.0, 1 x USB Type-C	1 x USB 3.0, 1 x USB Type-C
Headset Jack	N/A	1 (3.5 mm)	1 (3.5 mm)	1 (3.5 mm)
DC-In	N/A	N/A	1	1
Ethernet	N/A	N/A	1	1
SD Slot	N/A	1 x Micro SD Card Slot	N/A	N/A
Smart Card/CAC Reader	Full Slot, Reads ISO 7816 T=0, T=1; 1.8/3/5V Smart Card	N/A	Full Slot (reads ISO 7816 T=0, T=1); 1.8/3/5V Smart Card	

Mechanical and Environmental

AC/DC Adapter	Input: 100-240V AC; Output: 20V DC, 3.25A		Input: 100-240V AC; Output: 19V DC, 3.42A	
Battery Pack	Hot-Swappable Battery (3300mAh)	Hot-Swappable Battery (7.6V, 6000mAh) Hot-Swappable Battery (11.4V, 5400mAh) (Optional) Hot-Swappable Battery (11.4V, 8000mAh) (Optional)	Hot-Swappable Battery (11.4V, 5400mAh) Hot-Swappable Battery (11.4V, 8000mAh) (Optional)	
Enclosure	ABS + PC Plastic		ABS + PC Plastic and Magnesium-Aluminum Alloy	
Dimensions (H x W x D)	7.6 x 3.7 x 1.2 in/192 x 95 x 31 mm	5.8 x 9.2 x 1.1 in/147.3 x 234 x 27.7 mm	7.8 x 11 x 0.86 in/198 x 280 x 21.9 mm	8.3 x 12.4 x 0.86 in/212 x 316 x 21.9 mm
Weight	1.1 lbs/485 g	3.43 lbs/1.1 kg	3.1 lbs/1.4 kg	3.5 lbs/1.6 kg
Durability	IP65 and MIL-STD-810H Certified, Class 1, Division 2, Groups A, B, C and D (Optional)	IP65 and MIL-STD-810H Certified	IP65, MIL-STD-810H and MIL-STD-461F Certified	
Hazard of Electromagnetic Radiation to Ordnance (HERO) Testing	Yes	Yes	Yes	Yes
Regulatory	FCC Class B, RoHS Compliant		FCC Class B, CE, RoHS Compliant	
Temperature	Operation: -10°C to 50°C (14°F to 122°F) Storage: -20°C to 60°C (-4°F to 140°F)		Operation*: -10°C to 60°C (14°F to 140°F) Optional -30°C to 60°C (-22°F to 140°F) *For battery safety and optimal functionality and performance, the recommended usage temperature range is from -10°C to 45°C (14°F to 113°F) Storage: -55°C to 70°C (-67°F to 158°F)	
Humidity	0% - 90% Non-Condensing			

Major Options

Camera	8MP Back Camera		2MP Front Camera & 8MP Back Camera	
Barcode Scanner	2D Barcode Scanner (Reads 1D & 2D)		2D Barcode Scanner (Reads 1D & 2D)	
GNSS Module	GPS Module		GPS Module	
NFC/RFID Reader	HF 13.56 MHz, ISO 15693, 14443A(B), 18000-3 Mode 1		N/A	N/A
UHF RFID Reader	865 – 928 MHz, EPCglobal Class 1 Gen 2/ISO 18000-6C; Reading Distance of 16 ft (4.87 m) with Integrated ThingMagic Micro Module & Embedded Antenna; Reading Range of 30 ft (9.1 m) with Trigger Grip Antenna	865 – 928 MHz, EPCglobal Class 1 Gen 2/ISO 18000-6C; 16 ft (4.87 m) Reading Distance	865 – 928 MHz, EPCglobal Class 1 Gen 2/ISO 18000-6C; 16 ft (4.87m) Reading Distance	865 – 928MHz, EPCglobal Class 1 Gen 2/ISO 18000-6C; 30 ft (9.14m) Reading Distance
Mobile Broadband	N/A	N/A	4G LTE/AWS	4G LTE/AWS
Long-Range BT	Class 1 BT (1000 ft)	Class 1 BT (1000 ft)	Class 1 BT (1000 ft)	Class 1 BT (1000 ft)

* Specifications subject to change without notice.

Rugged Tablets



Model	DT313Y	DT340T
System		
CPU	Intel® Core™ i5-10210U, 4-Core, up to 4.10 GHz Intel® Core™ i7-10710U, 6-Core, up to 4.7 GHz	Intel® Core™ i7/i5 processor
GPU	N/A	(Optional: RTX A1000)
RAM	8GB to 32GB	64GB
Storage	256GB to 2TB flash	256GB to 2TB flash
Operating System	Microsoft® Windows® 10/11 IoT Enterprise	Microsoft® Windows® 10/11 IoT Enterprise, 64bit or Ubuntu
NIST Compliance	NIST compliant BIOS available	
Display	13.3" LED-Backlit, High-Brightness (1000 nits) Touchscreen	14" LED-Backlit, High-Brightness (1000 nits) Touchscreen
Display Resolution	1920 x 1080	1920 x 1080
Fan/Fanless	Fanless	Fanless
Switches & Buttons	1 x Power Button, 2 x Brightness Buttons, 5 x Programmable Buttons	1 x Power Button, 2 x Programmable Buttons
Microphone	Built-In Microphone	Built-In Microphone
Speaker	Built-In Speaker	Built-In Speaker

Network Interface

WLAN	Wi-Fi 802.11ax, 2.4/5 GHz Dual Band	Wi-Fi 802.11ax 2.4/5/6 Ghz three band
BT	5.2	5.3

I/O Ports

USB Port	3 x USB 3.0, 1 x USB Type-C	1 x USB 3.0, 2 x USB 2.0
Headset Jack	1 (3.5 mm)	1 (3.5 mm)
DC-in	1	1
HDMI	N/A	1
Ethernet	1	1
Smart Card/CAC Reader	Full Slot (reads ISO 7816 T=0, T=1); 1.8/3/5V Smart Card	

Mechanical and Environmental

AC/DC Adapter	Input: 100-240V AC; Output: 19V DC, 3.42A	Input: 100-240V AC; Output: 19V 65W for w/o GPU SKU and 19V 230W for A1000 SKU
Battery Pack	Hot-Swappable Battery (11.4V, 5400mAh) Hot-Swappable Battery (11.4V, 8000mAh)(Optional)	2 x Hot-Swappable Battery (11.4V, 5400mAh) 2 x Hot-Swappable Battery (11.4V, 8000mAh)(Optional)
Enclosure	ABS + PC Plastic and Magnesium-Aluminum Alloy	ABS + PC Plastic and Magnesium-Aluminum Alloy with Antimicrobial Coating
Dimensions (H x W x D)	10.6 x 13.2 x 0.8 in/270 x 335 x 21 mm	9.6 x 14.8 x 1.16 in/244 x 376 x 29.5 mm
Weight	3.97 lbs/1.8 kg	6.38 lbs/2.9 kg
Durability	IP65 and MIL-STD-810H Certified	IP65 and MIL-STD-810H Certified
Regulatory	FCC Class B, CE, RoHS Compliant	
Temperature	Operation*: -10°C to 60°C (14°F to 140°F) Optional -30°C to 60°C (-22°F to 140°F) <small>*For battery safety and optimal functionality and performance, the recommended usage temperature range is from -30°C to 45°C (14°F to 113°F)</small>	Operation*: -20°C to 60°C (-4°F to 140°F), tested under MIL-STD-810H method 501.7, Procedure II, and method 502.7, Procedure II <small>*For battery safety and optimal functionality and performance, the recommended usage temperature range is from -10°C to 45°C (14°F to 113°F)</small>
Humidity	0% – 90% Non-Condensing	

Major Options

Graphics Card	N/A	NVIDIA RTX A1000 graphics card
Camera	2MP Front Camera & 8MP Back Camera	5M Front Camera & 8M Back Camera with Flash
Barcode Scanner	2D Barcode Scanner (Reads 1D & 2D)	N/A
GNSS Module	GPS Module	U-blox GPS module
Mobile Broadband	4G LTE/AWS	4G LTE/AWS
Antenna	N/A	Dual pass through the built-in docking cradle antenna

* Specifications subject to change without notice.

decisionpoint systems, inc. **JOHN GEARY**
Sr. Director of Rugged Tablet Sales
jgeary@decisionpt.com
978-490-7123

DT Research www.dtresearch.com **DT Research, Inc.**
2000 Concourse Drive, San Jose, CA 95131
Copyright © 2023, DT Research, Inc. All Rights Reserved.

Accessories

- Digital Pen



- Desktop Charging Cradle



- Docking Keyboard



- Slim Detachable Keyboard
- Handstrap with Kickstand



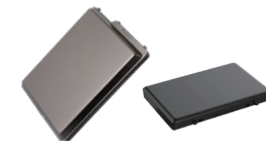
- Tablet Mount Cradle



- Battery Charging Kits



- Battery Pack



- Keyboard Mounting Kit for Vehicle/Wall Mount Cradle

- Vehicle Mount Cradle



Product Configurator
www.dtresearch.com/productconfig

081823 DT300 ENG